

BraemarTM
By SEELEY INTERNATIONAL 

INTRODUCING THE NEW BRAEMAR

evolution series

THE COLDEST ULTRA-LOW PROFILE EVAPORATIVE AIR CONDITIONER



AUSTRALIAN
MADE & OWNED

“Seeley International never stops striving to innovate and build the world’s most energy efficient heaters and air conditioners.

It is this commitment to excellence that’s at the heart of everything we do.”

Frank Seeley AM FAICD
Founder and Executive Chairman



The award winning company

Seeley International consistently wins awards each year for new product design, innovation and the environment.

Recent awards include:



evolve your thinking...



HIGHEST CAPACITY ULTRA LOW PROFILE

The coldest ultra-low profile evaporative air conditioner*



SEAMLESS STYLE

Curved louvres blend into your roofline

Low profile, streamline, below the roof ridgeline look



COST EFFECTIVE

Up to 90% cheaper to run^o

Save up to 90% on energy bills when compared to a reverse cycle air conditioner



AUSTRALIAN MADE AND OWNED

Manufactured by family owned Seeley International Australia's largest air conditioning manufacturer



WARRANTY

Quality that lasts – 7 year comprehensive warranty[^]

65 year history of Braemar excellence and reliability



QUALITY

NATA accredited test results substantiate superior product performance

Simple to install, maintain and operate



LIFESTYLE

Perfect for alfresco living, with options for security vents so you can leave doors and windows closed

Whisper quiet operation



ENVIRONMENT

Delivers fresh, outside air – not stale recycled air

Up to 90% less nasty CO₂ emissions[#]

*Braemar Evolution LPQI550 has the highest cooling capacity (kW), based on test results of all equivalent capacity sloped tank evaporative air conditioners, performed by a NATA accredited Meridian Test Laboratory, to the requirements of the Australian Standard AS2913-2000 Evaporative Air Conditioning Equipment.

^oBased on approximate running cost figures per annum sourced from Sustainability Victoria – see its Cooling Fact Sheet at www.sustainability.vic.gov.au/services-and-advice/households/energy-efficiency/toolbox/energy-efficiency-fact-sheets. Assumes a whole house area of 166 square metres, with 300 hours usage, a 60% duty cycle for air conditioners, and an electricity tariff of 28 cents/kWh. No brand names are mentioned in the Sheet. Note that evaporative coolers also use water. Information correct at time of printing, 16/08/2017.

[^]The 7 year comprehensive warranty is available exclusively (i.e. only) from Seeley International participating dealers. The warranty has terms and conditions, including the requirement for servicing of the product in accordance with the owner's manual. In the fourth year the service must be performed by Seeley International or its appointed nominee.

[#]Seeley International's calculations, based on publicly available data (2008). CO₂ emissions based on 1.09 kg CO₂ e/kWhr electricity purchased from grid for Victoria. Data sourced from Part 6 of Schedule 1 to the National Greenhouse and Energy Reporting (Measurement) Determination 2008 (Compilation No. 7, dated 1 July 2016).

Leading edge technology

EVEN WATER COVERAGE

Water distribution system includes a combination of pressurised and free flow water division systems which provide even water coverage within a compact height for maximum pad area and cooling.

UV STABILISED AND CORROSION FREE

The cabinet and water reservoir components are injection moulded structural foam polypropylene (Permatuf®). The cabinet and reservoir are UV stabilised and corrosion free.

MAXIMUM COOLING

Honeycomb, high efficiency Chillcel® cooling filter pads cover the entire side of air conditioner to maximise cooling.

SUPERSTEALTH TECHNOLOGY

SuperStealth inverter motor and SuperStealth fan for high energy efficiency.



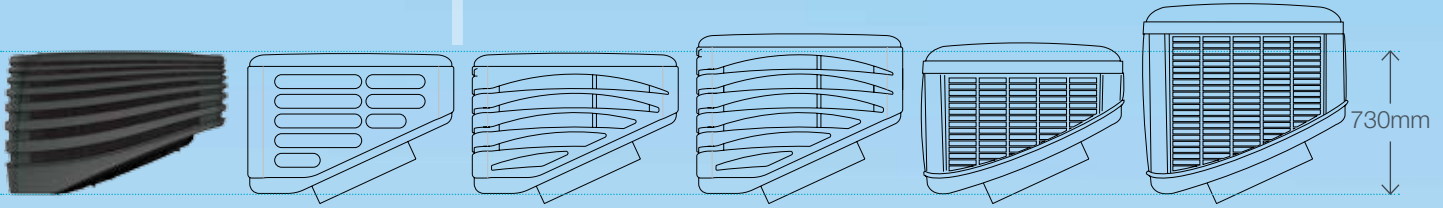
RELIABILITY

Tornado Pump for exceptional reliability in extreme conditions.

MINIMISE DRAFTS IN WINTER

The WeatherSeal™ consists of two semi-circular, polypropylene blades, hinged and counterbalanced, to open automatically when the fan is activated, and to close when the fan is switched off.

high capacity low profile



Braemar
by SEELEY INTERNATIONAL
evolution series

Max. capacity
13.2kW
Max. airflow
2850L/s

other brand

Max. capacity
12.1kW
Max. airflow
2440L/s

other brand

Max. capacity
7.5kW
Max. airflow
2100L/s

other brand

Max. capacity
12.1kW
Max. airflow
2570L/s

other brand

Max. capacity
6.4kW
Max. airflow
2130L/s

other brand

Max. capacity
9.8kW
Max. airflow
2890L/s

The Braemar Evolution is the highest capacity sloped tank evaporative air conditioner on the market*...and one of the smallest.

With its low profile, sleek design, it unobtrusively sits below the roof ridgeline to blend seamlessly into your home.



*Braemar Evolution LPQI550 has the highest cooling capacity (kW), based on test results of all equivalent capacity sloped tank evaporative air conditioners, performed by a NATA accredited Meridian Test Laboratory, to the requirements of the Australian Standard AS2913-2000 Evaporative Air Conditioning Equipment.

touch screen control

The Braemar Evolution is controlled
by the intuitive MagIQtouch touch screen controller



PROGRAM MODE

7 day, 4 time period program, customisable to suit your lifestyle (including a temporary over-ride function).



ENERGY SAVING QUIET MODE

Automatically reduces fan speed overnight for even greater economy and whisper-quietness.



CHILD ACCESS LOCK

Select a pin code to control access to your Controller.

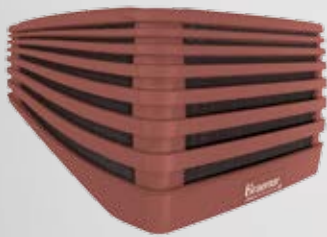
specifications



Colour Range*



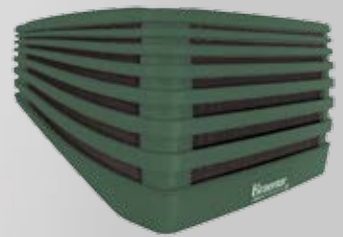
Slate Grey



Terracotta



Beige



Heritage Green

* Colours may vary. Heritage Green made to order.

Model	Cooling capacity (kW)	Nominal power motor (W)	Length (mm)	Width (mm)	Height – Front (mm)	Height – Rear (mm)	Operating weight (kg)	Airflow (L/s)
Evolution LPQI250	8.4	340	1150	1150	730	380	88	1500
Evolution LPQI350	10.4	430	1150	1150	730	380	88	2000
Evolution LPQI450	11.8	600	1150	1150	730	380	88	2350
Evolution LPQI550	13.2	950	1150	1150	730	380	88	2850

The above data was drawn from Meridian Test Laboratory's test analysis. The testing was performed by a NATA accredited laboratory to the requirements of the Australian standard AS2913-2000 "Evaporative Air Conditioning Equipment." Achievable with ambient 38 °C DB, 21°C WB, room temperature 27.4 °C.

BraemarTM
By SEELEY INTERNATIONAL 

evolution

1300 360 815
braemar.com.au

